

Ordering code

MS		A	20	B	/			*
----	--	---	----	---	---	--	--	---

Further details in clear text

With built-in pressure gauge = 2
(6 measuring connections)

No code = Threaded connections G 1/4"
2 = Threaded connections M14 × 1.5

Threaded connections = A

No code = Mineral oil
V = Phosphate ester

Series 20 to 29 = 20
(20 to 29: unchanged installation and connection dimensions)

16 = max. usable indication range 1.6MPa
25 = max. usable indication range 2.5 MPa
60 = max. usable indication range 6.0MPa
100 = max. usable indication range 10MPa
160 = max. usable indication range 16MPa
250 = max. usable indication range 25MPa
400 = max. usable indication range 40MPa

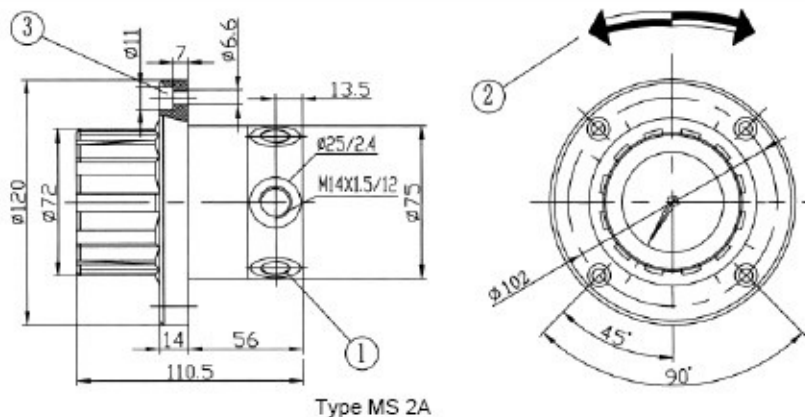
Technology of Beijing Huade Hydraulic =B

Technical data (for applications outside these parameters, please consult us!)

Operating pressure, max. (MPa)	31.5	The maximum permissible working pressure is dependent on the scale value of the built-in pressure gauge. The area between the maximum permissible value (pressure gauge) and the scale value is marked in red.
Back pressure on the tank connection, max. (MPa)	1	
Indication accuracy of the built-in pressure gauge (types MS 2)		The indication accuracy of the built-in pressure gauge is 1.6% of the red scale value at 20°C. The indication error for each 10°C increase in temp. is + 0.3 %, and , 0.3% per 10°C reduction in temp. of the red scale value.
Hydraulic fluid		Mineral oil (for NBR seal) or Phosphate ester (for FPM seal)
Viscosity (mm ² /s)	10 to 800	
Fluid temperature range (°C)	-30 to +80	
Weight (kg)	1.7	

Unit dimensions: Type MS2A

(Dimensions in mm)



Type MS 2A

- 1 6 measuring connections and 1 tank port are equally spaced around the circumference
- 2 Readings are obtained by turning the rotary knob to the left or right. Zero points are arranged between the indicating points
- 3 4 fixing screw holes

BEIJING HUADE HYDRAULIC INDUSTRIAL GROUP CO.,LTD.	Piston Type Pressure Switch Type HED 1, Series 40	RE30166/12.2004
	up to 50 MPa	Replaces: RE30166/5.2001

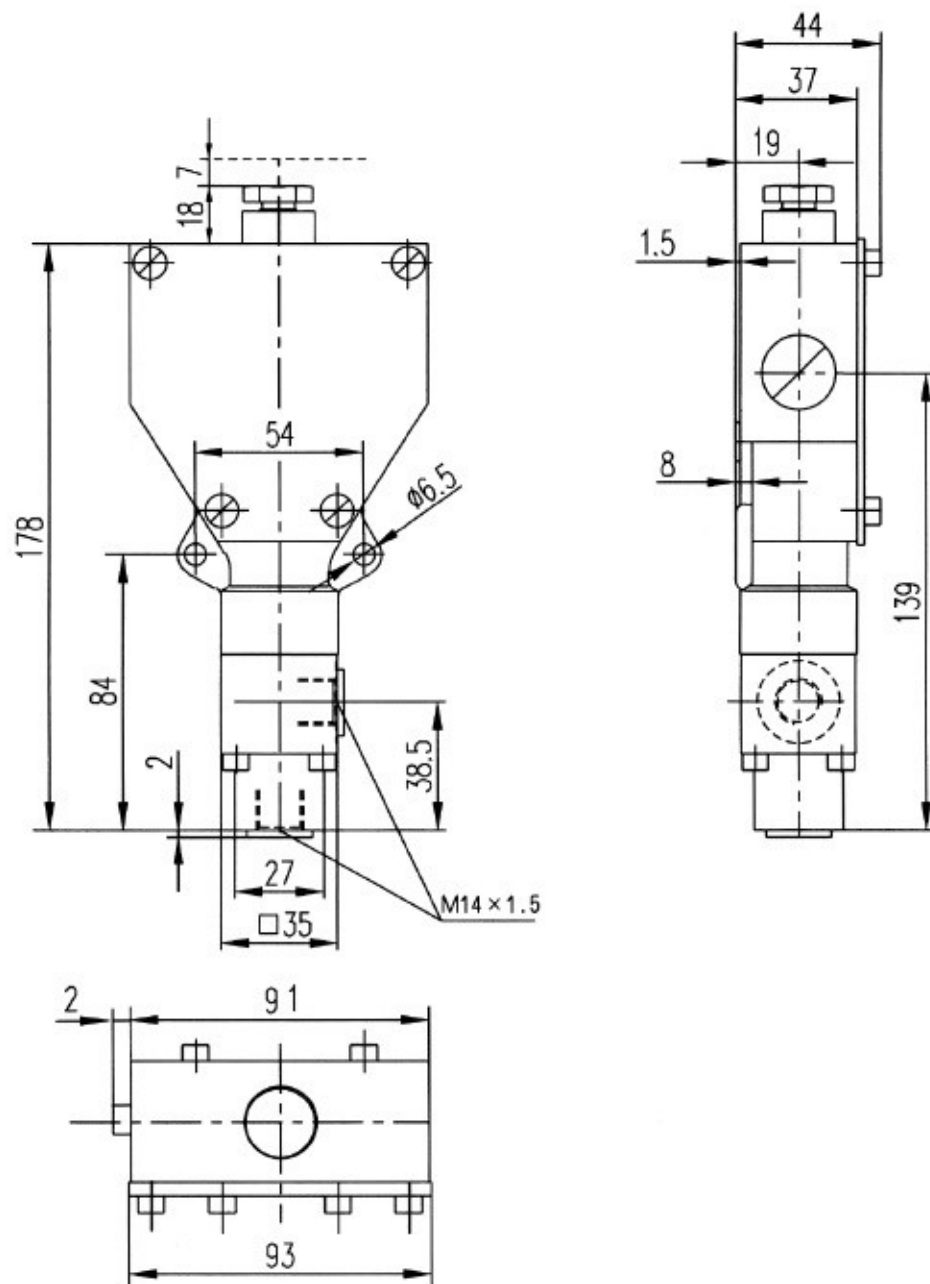
Hydro-electric pressure switches type HED 1 are piston pressure switches. Type HED 1 pressure switches have the task of switching on or off an electrical circuit dependent on pressure. The live electrical terminals are covered by an isolating strip.

Adjustment of the switching pressure

To adjust the switching pressure, the name plate must first be removed and the locking screw loosened. The switching pressure is set by rotating the adjustment screw. Finally, the adjustment screw must be secured by the locking screw and the name plate refitted.



illuminate



Ordering code

HEDI A 40 B / *

With drain port = K
Without drain port = O

Series 40 to 49 = 40 (40 to 49: unchanged installation and connection dimensions)

Technology of Beijing Huade Hydraulic =B

HED 1 K	max. adjustable pressure 10 MPa = 100 max. adjustable pressure 35 MPa = 350 max. adjustable pressure 50 MPa = 500
---------	---

HED 1 O	max. adjustable pressure 5 MPa = 50 max. adjustable pressure 10 MPa = 100 max. adjustable pressure 35 MPa = 350
---------	---

Further details in clear text

No code = Mineral oil
V = Phosphate ester

No code = Standard model without intrinsically safe circuit

No code = Without lamp
L 24 = Lamp for 24 V (20 V to 35 V)
L 110 = Lamp for 110 V (90 V to 130 V)
L 220 = Lamp for 220 V (180 V to 240 V)

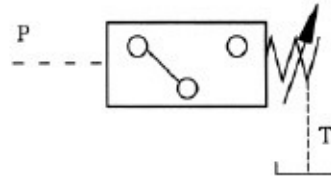
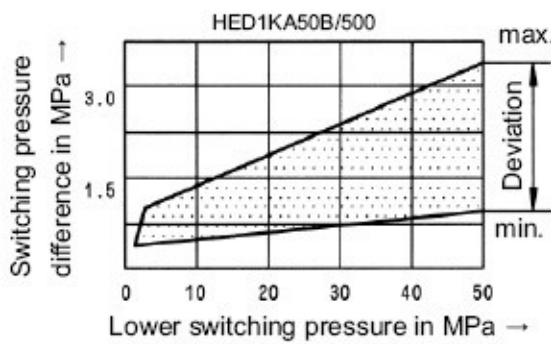
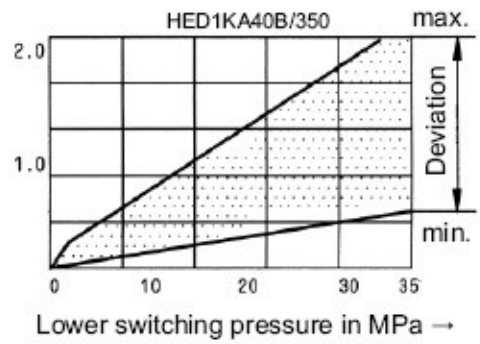
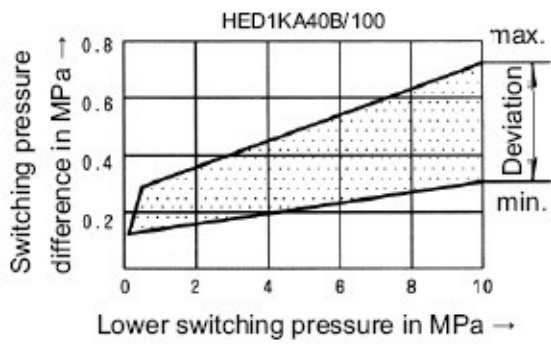
No code= Cable gland

Technical data (for applications outside these parameters, please consult us!)

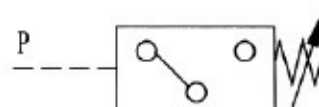
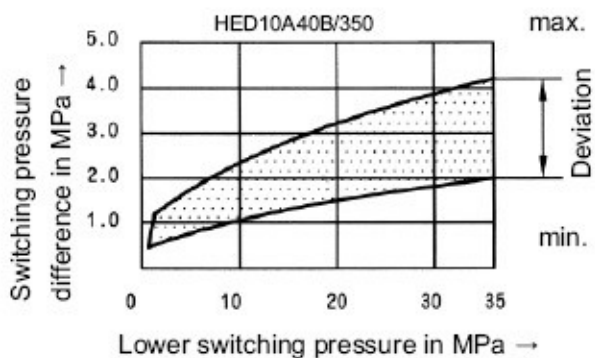
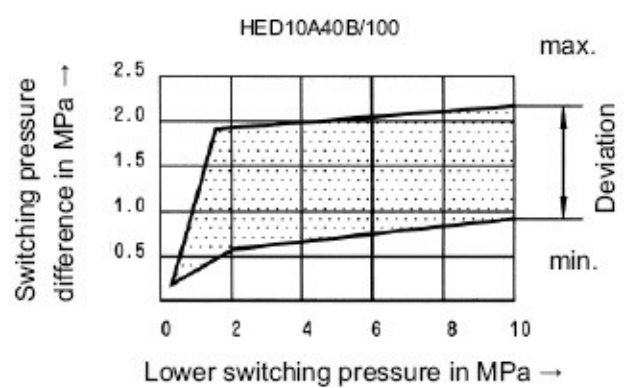
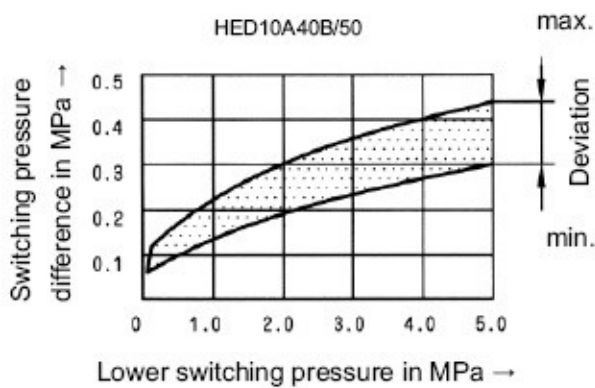
Pressure fluid	Mineral oil or Phosphate ester				
temperature range	(°C)	-30 to +80			
Viscosity range	(mm ² /s)	10 to 800			
Switching accuracy (repeatability)	< ± 2 % of set pressure				
Switching frequency	HED1KA40B/..	up to 300 cycles/min			
	HED10A40B/..	up to 50 cycles/min(briefly also... 100cycles/min)			
Pressure at drain port	(MPa)	up to 2			
Settable ranges for HED 1 KA 40B/..	(MPa)				
Pressure rating	Max. operating pressure briefly	Recovering pressure		Action pressure	
		min.	max.	min.	max.
10	60	0.3	9.2	0.6	10
35	60	0.6	32.5	1.0	35
50	60	1.0	46.5	2.0	50
Settable ranges for HED10A40B/..					
Pressure rating	Max. operating pressure briefly	Recovering pressure		Action pressure	
		min.	max.	min.	max.
5	8	0.2	4.5	0.35	5
10	35	0.3	8.2	0.8	10
35	35	0.6	29.5	2.0	35
Electrical connection	cable gland				
Contact loading	- AC voltage	460V, 15A			
	- DC voltage	40V, 1.0A / 125V, 0.4A / 250V, 0.2A			
Insulation to DIN 40 050					
Weight	(kg)	1.2			

Switching pressure difference - pressure switches with or without drain port

With drain port



Without drain port



Notice

1. The fluid must be filtered. Minimum filter fineness is 20 μm .
2. The tank must be sealing up and an air filter must be installed on air entrance.
3. Products without subplate when leaving factory, if need them, please ordering specially.
4. Valve fixing screws must be high intensity level (class 10.9). Please select and use them according to the parameter listed in the sample book.
5. Roughness of surface linked with the valve is required to $\sqrt{0.8}$.
6. Surface finish of mating piece is required to 0.01/100mm.

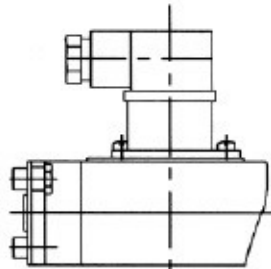
Features:

- For subplate mounting
- For pipe installation
- 3 pressure stages
- Plug-in connector with circuit (indicator lamp)
(separate order)

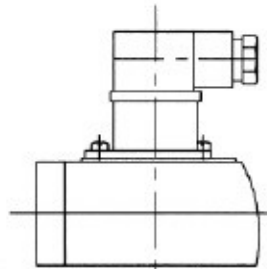


Features

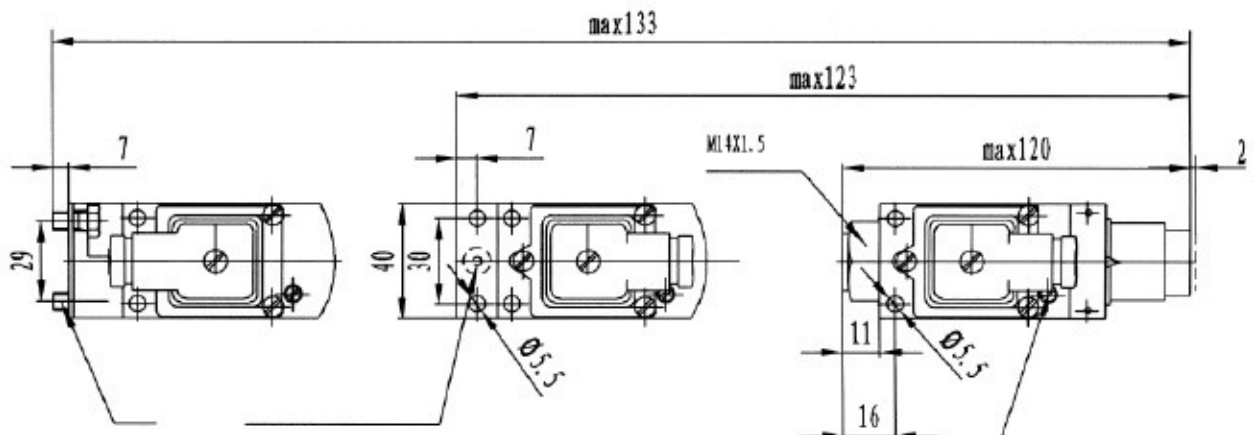
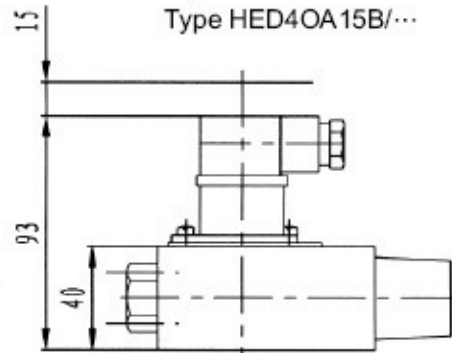
Vertical stacking systems
Type HED4OH15B/...



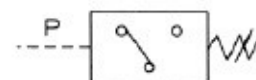
Subplate mounting
Type HED4OP15B/...



Pipe installation
Type HED4OA15B/...



screw is loosened before adjusting pressure
screw is screwed down after adjusting pressure



Ordering details

HED40		15	B	/		S	*
Vertical stacking systems	= H						Further details in clear text
Subplate mounting	= P						
Pipe installation	= A						
Series 15(10 to 19: unchanged installation and connection dimensions)	=15						
Technology of Beijing Huade Hydraulic	= B						
Max. settable pressure 5 MPa	= 50						
Max. settable pressure 10 MPa	= 100						
Max. settable pressure 35 MPa	= 350						
connected by small plug	=Z14						
Lamp for 24 V (25 V to 35 V)	= L 24						
Lamp for 110 V (90 V to 130 V)	= L110						
Lamp for 220 V (180 V to 240 V)	= L220						
with protective cap	=S						
Mineral oil	= No code						
Phosphate ester (other seals on request)	= V						

*Should be orderd separately for horizontal stacking

Technical data (for applications outside these parameters, please consult us!)

Pressure setting range (MPa)

Pressure stage	Max. operating pressure	Recover pressure		Action pressure	
		min.	max.	min.	max.
5	10	0.2	4.6	0.4	5
10	35	0.3	8.9	0.8	10
35	35	0.6	32.2	2	35

Viscosity range 10 to 800mm² /s

Switching accuracy (repeatability) < ± 1% of set pressure

Switching frequency 120/min

Max. connection cross sectional area 1.5mm²

Contact loading- AC250V;5A

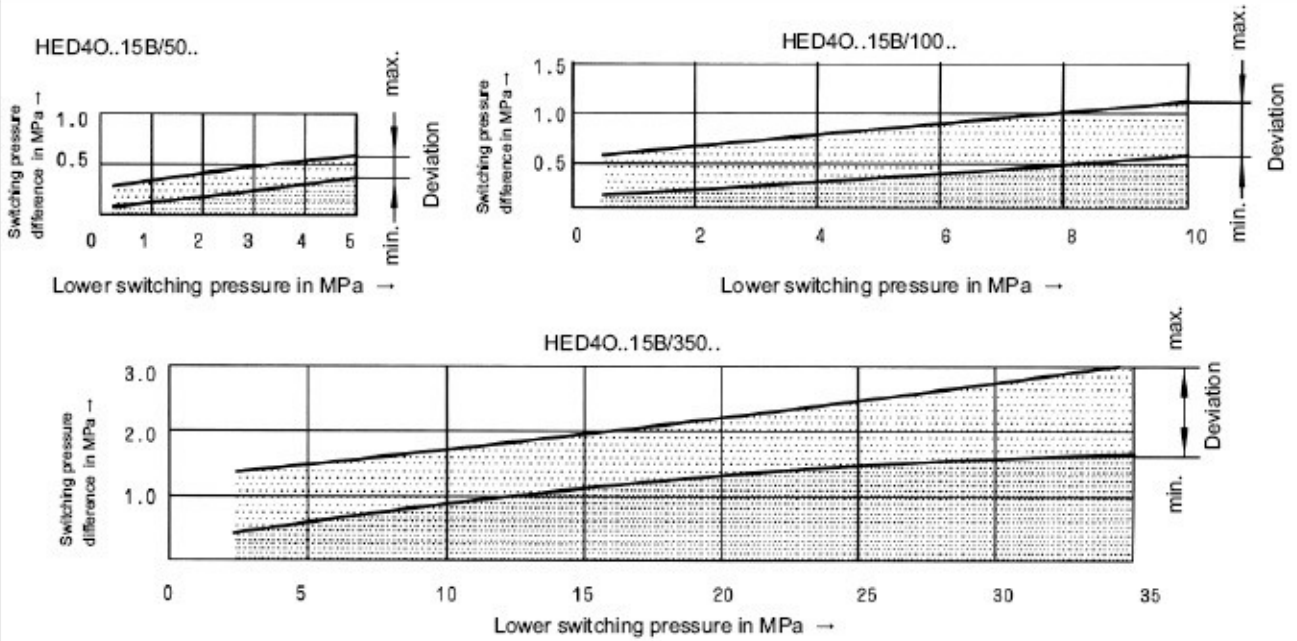
- DC50V,1A or 250V,0.2A

Weight - Hydro-electric pressure switches 0.6Kg

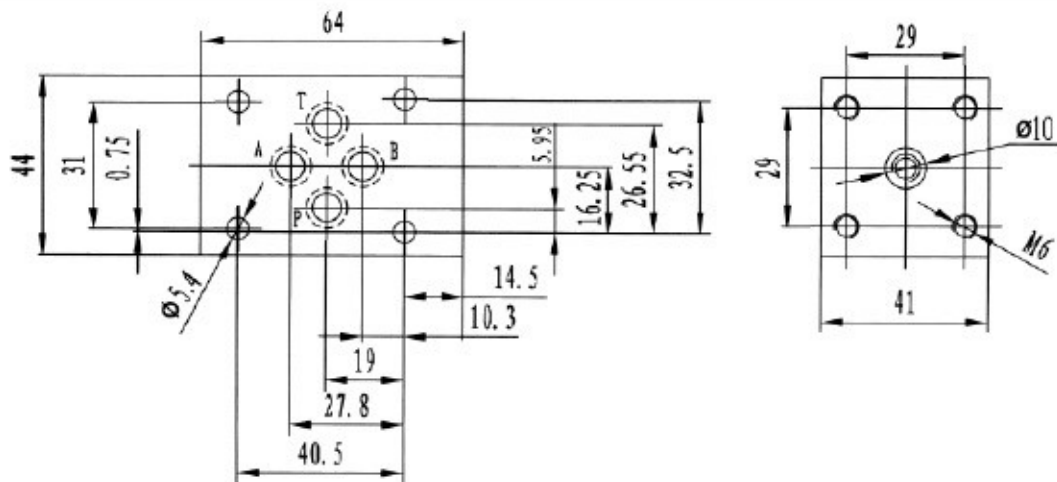
- Sandwich plate for vertical stacking assemblies

0.8kg (Size 6) 1.9kg (Size 10)

Switching pressure difference - pressure switches with or without drain port



Installation guidelines: for applying the pressure switch HED 4...in stacking assemblies size 6 (Dimensions in mm)



Installation guidelines: for applying the pressure switch HED 4...in stacking assemblies size 10 (Dimensions in mm)

